

## Firmware Download Procedure M84PRO Printers

### Using IEEE Parallel Interface Cable.

- 1) Connect the cable from the PC/Host to Printer.  
LPT 1 to Printer port. ( Interface card and cable must be of IEEE specs.)
- 2) Set DSW 2-6 on the printer to 'ON'. ( Push up)
- 3) Turn Printer Power On. It will display as in fig.no.3



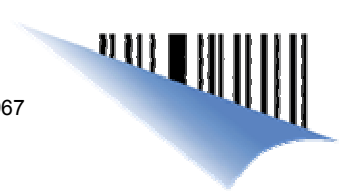
Set No. 6 to On. And  
Turn On Power.

Fig 2



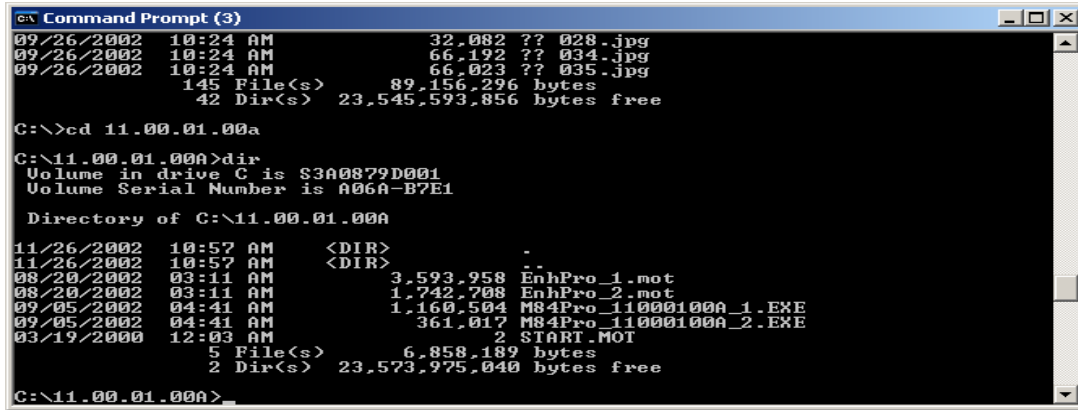
Printer Ready . Waiting for  
Data.

Fig 3

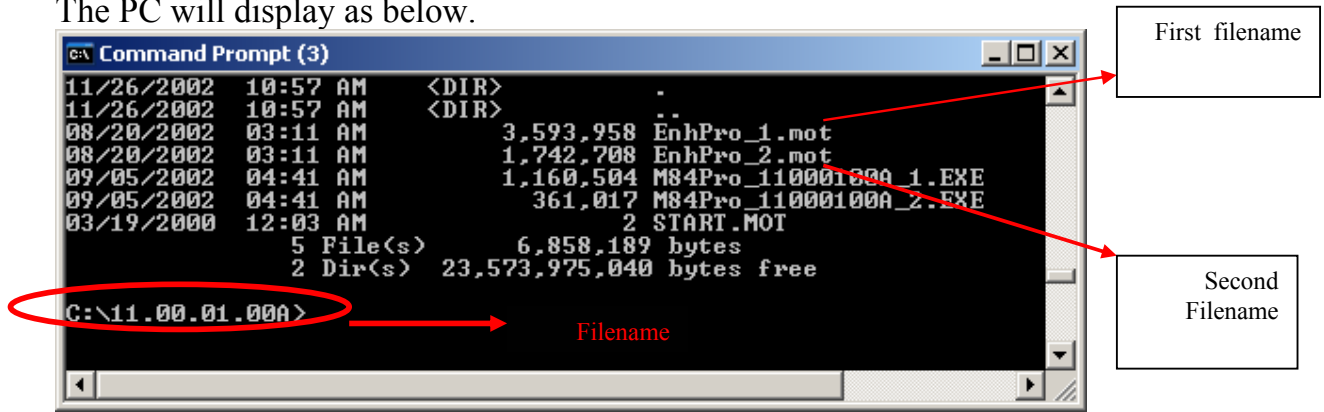


4) Go to MS Dos.Command Prompt.by clicking the I-Con. And call to the correct directory where the firmware was saved.For example, if you have saved the firmware file in C:\ drive, then type in as follows:

Example: At C:\ **CD 05.00.05.02(2072)** then press 'Enter'

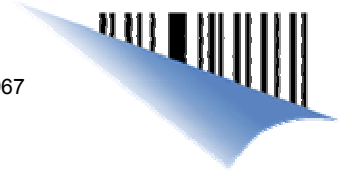


The PC will display as below.



This shows that you are in the directory where the firmware was saved.

5) At this prompt, Type the command as follows: **Copy start .mot Lpt1** and press 'Enter'



6) Printer will display as below:



7) At this Promt ,Type the command : **Copy (First Filename) .mot LPT1**. Press Enter.  
The printer will Display as below.



8) Wait for few Minutes ( 5-10) for the downloading process of the first file.

9) Once the downloading is completed for the first file, Printer will display as follows:





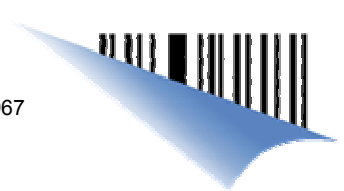
**DCS & Labelling Worldwide**

**BARCODE SATO INTERNATIONAL PTE LTD**

438A Alexandra Road #05-01/02 Alexandra Technopark S'pore 119967

Tel: (65) 6271-2122 Fax: (65) 6271-2151 E-Mail: sales@sato-int.com

[www.barcodesato.com](http://www.barcodesato.com)



- 10) Press feed key to continue with second file.Repeat procedure from step No.5.Only this time type in the **second filename**.
- 11) Once the **second filename** has complete, Turn off printer and Set DSW 2-6 to OFF .
- 12) Do a Factory Clear All. Instruction is in the manual.
- 13) New Firmware will be activated when Printer Power is turn ON.

END